

RU Ready 4 Rice?

CAMPUS COMPUTING 101

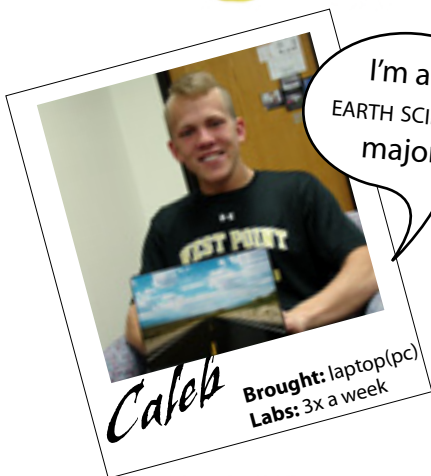
tips and advice for new students



Read on for info about:

Student stories . . . 2**Getting a NetID . . . 3****Keeping passwords secret****Preparing for computing at Rice . . . 4****Lab Printers****Computer recommendations . . . 5****PCs, Macs, and Linux Requirements****Where to buy a computer near Rice . . . 6**

Find all this and more on the Rice IT website

<http://it.rice.edu/newStudent.aspx>**Check out Rice students' computing profiles!**

Student Perspectives

I'm an
HISPANIC STUDIES
and MANAGERIAL
STUDIES
major.



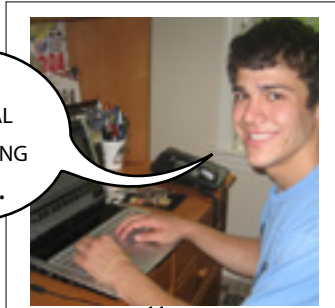
Kenneth
Brought: laptop (mac)
Labs: 1-2x a week

International View

"I bought a laptop upon arrival in Houston from India. This way I was able to get the newest and cheapest thing available."

-Sohum

I'm a
CHEMICAL
ENGINEERING
major.



Denny
Brought: laptop (pc)
Labs: 2x a week

Student Survey Results



In a survey of 935 undergrads:

- »60% brought a Windows system lap top
- »41% brought a Macintosh lap top
- »5% brought a Linux system lap top
- »8% brought a Windows system desktop
- »2% brought a Macintosh desktop
- »1% brought a Linux system desktop.

These numbers do not add up to 100 because some students brought more than one computer.

I'm a CIVIL
and
ENVIRONMENTAL
ENGINEERING
major.



Aaron
Brought: laptop (pc)
Labs: everyday

Back Up Lesson

"I received a Facebook friend request from Joe ITguy during the last week of classes. I usually only accept friend requests from people I know, so my immediate reaction was to deny his request, but I decided to check out Joe's Facebook just to make sure I wasn't missing anything.

That day Joe had posted a reminder telling Rice students to back up their hard drives before finals started. I thought this was pretty good advice; I try to back up my computer every few months, but hadn't thought about it until I saw Joe's post. I accepted his friend request and went to save my first semester's worth of work to my external hard drive.

Joe turned out to be a lifesaver! Halfway into finals week, I accidentally tripped over my laptop charger while studying. My charger ended up breaking while I was in the middle of a project! Luckily for me, all of my schoolwork and study materials were already backed up. Joe saved me from failing all of my finals!"

-Lilly

Learn more about backing up your data
<http://tinyurl.com/ricebackup>

How much time do students spend on a computer a day?

1 or less hours	1%
2-4 hours	32%
5-7 hours	49%
8+ hours	18%

What's Your NetID?



- **What's a NetID?**

Your NetID is your assigned login credential. You pick your NetID password. Use it to log onto lab computers, check your email, etc.
<http://tinyurl.com/ricenetid>

- **What if I forget my NetID or password?**

You'll need your password during o-week, so get it reset if you can't remember it. Visit iforgot.rice.edu or contact the Help Desk:
helpdesk@rice.edu 713.348.HELP(4357)

- **What if I dislike my NetID?**

You can't change your NetID, but you can pick your own alias for your email address as long as it meets a few rules (not already taken, no profanity, etc.)
<http://itselfservice.rice.edu/>

- **What is my NetID good for (besides email)?**

Use it to access the Rice wireless network, log onto library or lab computers, log into the course management system (OWL-Space), and much more!

- **Who can use my NetID?**

No one but you. Keep your NetID private and never tell anyone your password.

How much time do students spend on OWL-Space?

Daily	76%
2-3 times a week	20%
2-3 times a month	2%
Few times a semester	1%

Keep your password secret

- **What's the big deal about my password?**

Phishing scams (email messages that harvest your personal information) use your password to send out thousands of spam messages and to hack into the Rice network, resulting in compromised files and databases.

- **How can I tell if an email message is a real request?**

Easy: no one at Rice will ever ask you to verify your account or give up your password, your student number, your credit card information, or any other personal information over email. Ever. If you get an email asking for your info, it's a hoax. Delete it and move on. This is also true of most legitimate businesses, so don't be fooled by similar messages that appear to be from the bank or other services you use.

- **What happens if I fall for a scam?**

Contact the Help Desk or your Student Computing Consultants (SCC's) immediately to get your password reset before the hacker uses it. Otherwise, the hacker will change your password, locking you out of your own account while they do their dirty work.



Preparing for computing at Rice

FYI: If you bring a phone for your dorm room, domestic long distance calls are free!

• Am I required to bring a computer?

No. You will have access to campus computing resources, including labs with printers. 86% of students use the computer labs and almost every Rice student brings their own computer.

•What kind of computer should I bring (or buy)?

Your choice. But your computer should be something you're comfortable using and should meet some minimum standards. For requirements, recommendations, and purchasing discounts, see pages 5-6.

•Can I use my Rice email before I arrive?

Yes. Your Rice email is available for use as soon as you set your password.

•What happens when I have a computing problem?

We'll help! For advice or assistance before or after you arrive, ask Joe ITguy on Facebook or contact the Help Desk:
helpdesk@rice.edu or 713.348.HELP(4357)



Lab printers

• Do I need my own printer?

No. About half of the Rice undergraduates bring their own printers, but you don't have to bring one. You can print for as little as 6 cents per page in the campus labs, including in your own college.

<http://tinyurl.com/riceprint>

• How much am I spending in printing charges?

Monitor your printing charges in the IT Self-Service web page. Printing charges are updated once each day at midnight.

<http://itselfservice.rice.edu/>

The Rice cashier includes printing charges in your bill each month.

Packing List

- Computer**
Advisable (but not required)
- Printer**
Convenient (but not necessary)
- USB Ethernet Connection Cable**
To connect your computer to the wired network in college rooms. The wired network is almost 20% faster than wireless. Get a 25 foot cable so you have flexibility in arranging your room.*
- USB Flash Drives**
Advisable for backing up for files.
- Original Software and Warranties**

I'm a MATH, BIOCHEMISTRY AND CELL BIOLOGY, and GLOBAL HEALTH major.



Anand

Brought: laptop (pc)
Labs: 3x a week

I'm an ECONOMICS major.



Kathleen

Brought: laptop(mac)
Labs: 1-2x a week

***What kind of cable?**
568a cable (standard Cat5/6 with RJ-45 jacks)
Common type of Ethernet cable sold in computer and office supply stores.

Computing Requirements

Your computer's operating system should be up-to-date and have the latest patches installed. You should also have anti-virus software installed. At Rice, before you can login to the campus network, your computer must be cleared by Clean Access, an application that scans your computer to make sure you have the most recent operating system patches and anti-virus software. See:

<http://tinyurl.com/riceclean>

Computer Recommendations

Mac

Most of these recommendations are already standard in Macs:

- Go for the most power currently available and in your budget
- 4 GB RAM
- Firewire 800 ports preferred, but not required
- Drive spin speed minimum 5400 rpm if you plan to edit video or audio files
- AppleCare Protection Plan for 4 years
- OS X

PC

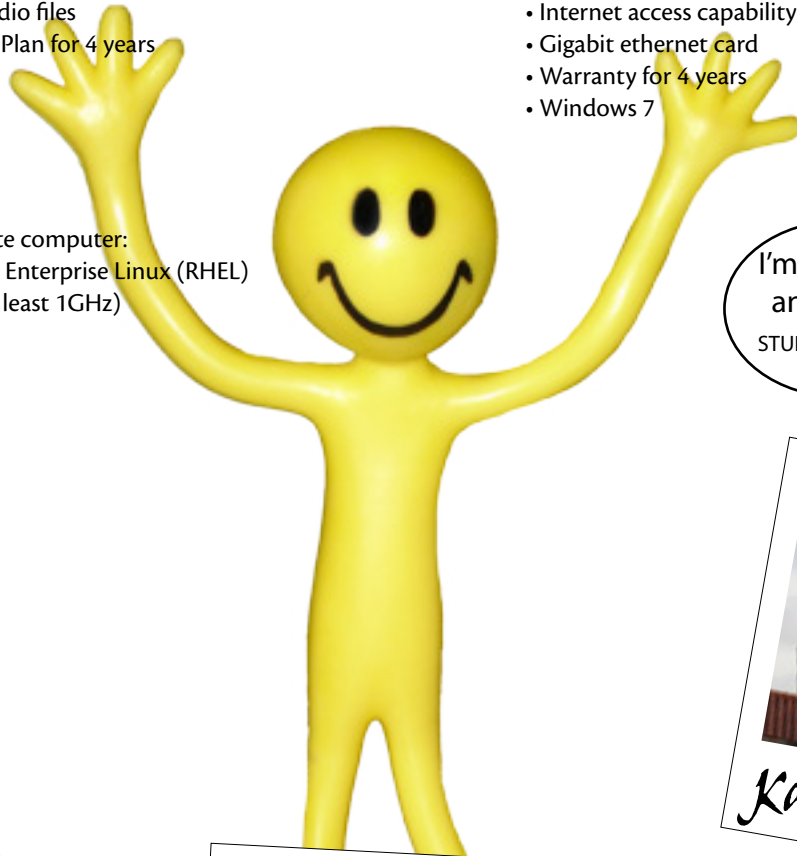
For a general undergraduate computer:

- 2 GHz 32-bit (x86) or 64-bit (x64) processor
- 4 GB of system memory
- 802.11 A/B/G/N wireless card
- 320 GB of hard drive capacity or local memory
- RW DVD/CD Drive
- Audio output capability
- Internet access capability
- Gigabit ethernet card
- Warranty for 4 years
- Windows 7

Linux

For a general undergraduate computer:

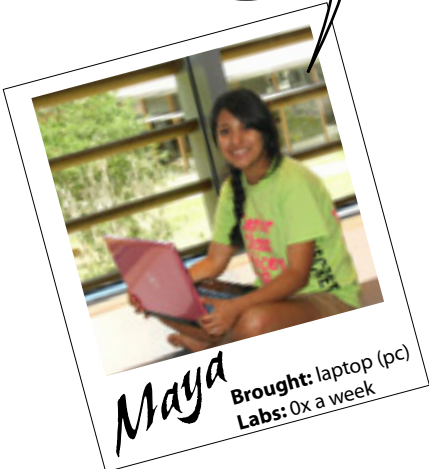
- Certified to run Red Hat Enterprise Linux (RHEL)
- A modern processor (at least 1GHz)
- 4 GB of system memory
- 320 GB hard drive
- RW DVD/CD Drive
- Gigabit ethernet card



I'm an HISTORY and GERMAN STUDIES major.



I'm a BIO CHEMISTRY AND CELL BIOLOGY and PSYCHOLOGY major.



What kind of computer might work best for students? Here are basic computer suggestions. Need more advice? Visit it.rice.edu/recs or contact the Help Desk (713.348.HELP (4357) or helpdesk@rice.edu).

Rice University does not endorse any specific vendor.



Where to buy a computer near Rice

If you are shopping online, make sure you check out Rice student discounts available through the university's Technology Marketplace: <http://market.rice.edu/>.

If you are going to purchase when you arrive in Houston, here are a few retail locations that are 6 miles or less from the Rice campus:

A

Apple Store
the Galleria II, Level 2
5085 Westheimer Road
Houston, TX 77056
Phone: 713.850.8924

<http://www.apple.com/retail/houstongalleria/>

B

Microsoft Store
the Galleria, Level 1
5015 Westheimer Rd
Houston, TX 77056
Phone: 713.860.5790

<http://www.microsoftstore.com/houston>

C

Best Buy
near the Galleria
5133 Richmond Ave
Houston, TX 77056
Phone: 713.552.1512

<http://stores.bestbuy.com/291>

Take Rice ID and driver's license for Apple discount



D

Marnoble Computer Sales & Services

Rice Village area
5002 Morningside Drive
Houston, TX 77005
Phone: 713.520.0033

<http://www.marnoble.com/>

E

West-U PC

West University area
3642 University Blvd Suite #101
Houston, Texas 77005
Phone: 713-429-4546

<http://www.westupc.com/products.html>

